



L O S T A R T

HISTORIC LANDSCAPE FURNISHINGS

FOUNTAINS

MIDDLESBROUGH: ALBERT PARK



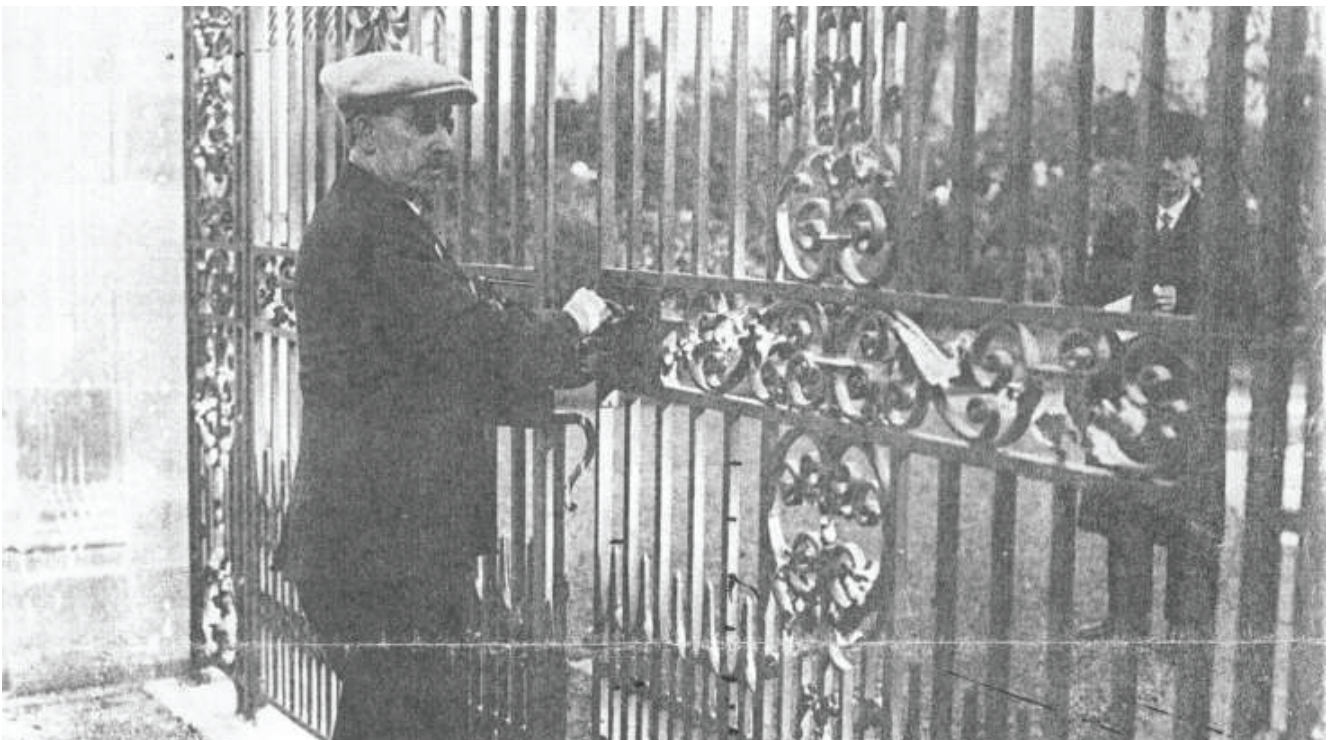


L O S T A R T

HISTORIC LANDSCAPE FURNISHINGS

MIDDLESBROUGH: ALBERT PARK

The scheme involved the recreation of the main entrance gates installed in 1922, when the original Victorian gates were replaced as part of a redesign of the entrance to include memorials to those local soldiers who had given their lives in the Great War.



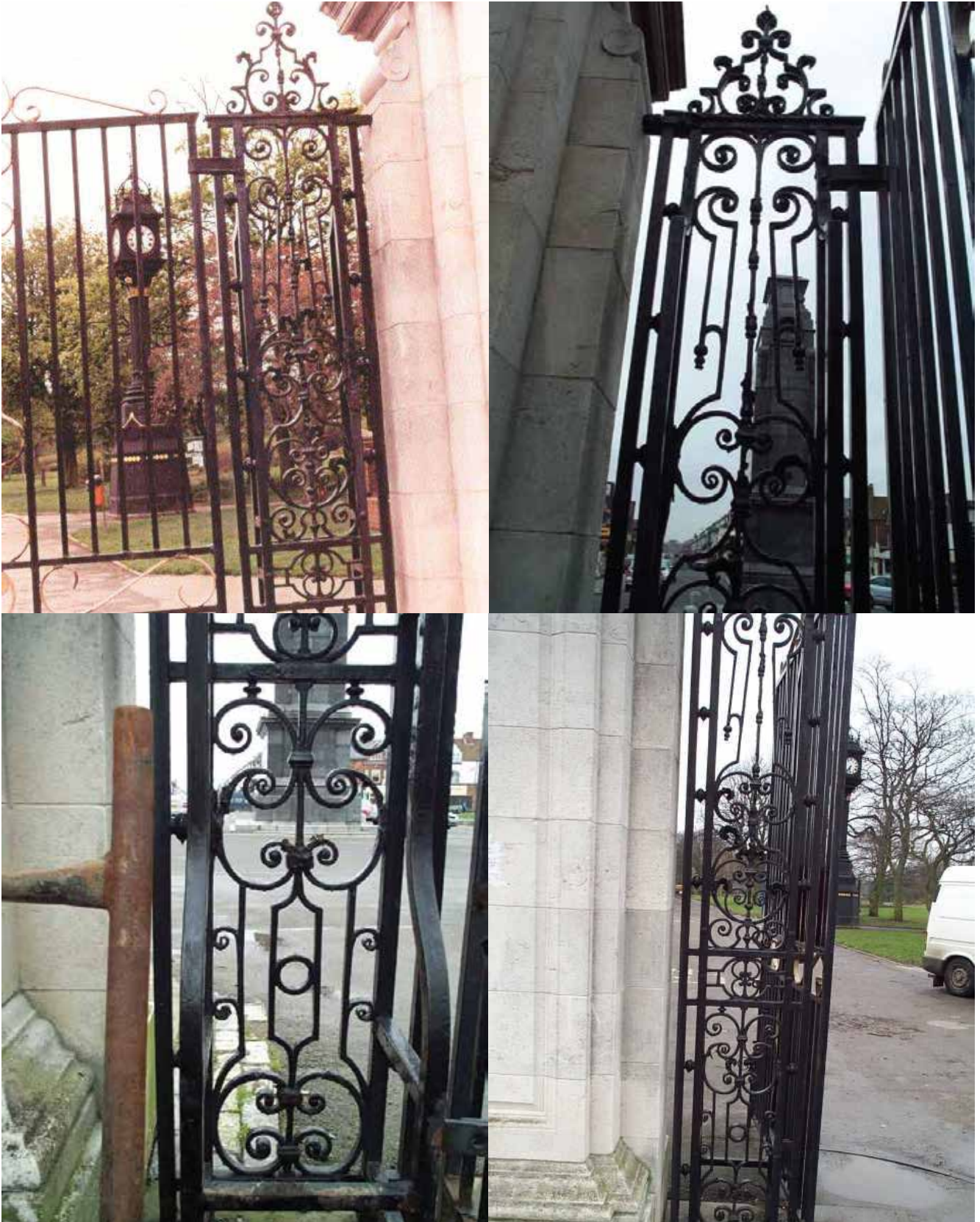
In the 1970s these gates were found to be in an unsafe condition and were replaced by a less ornate set of gates produced by local apprentices as part of a training scheme.

The intention to store the 1920's gates for future use appears to have been ignored and so the work had to be conducted based on detail from the surviving wrought iron piers and historical documents such as the photographs shown here.

The remaining elements of the gates provided a good indication of the magnificence and build quality of the originals.



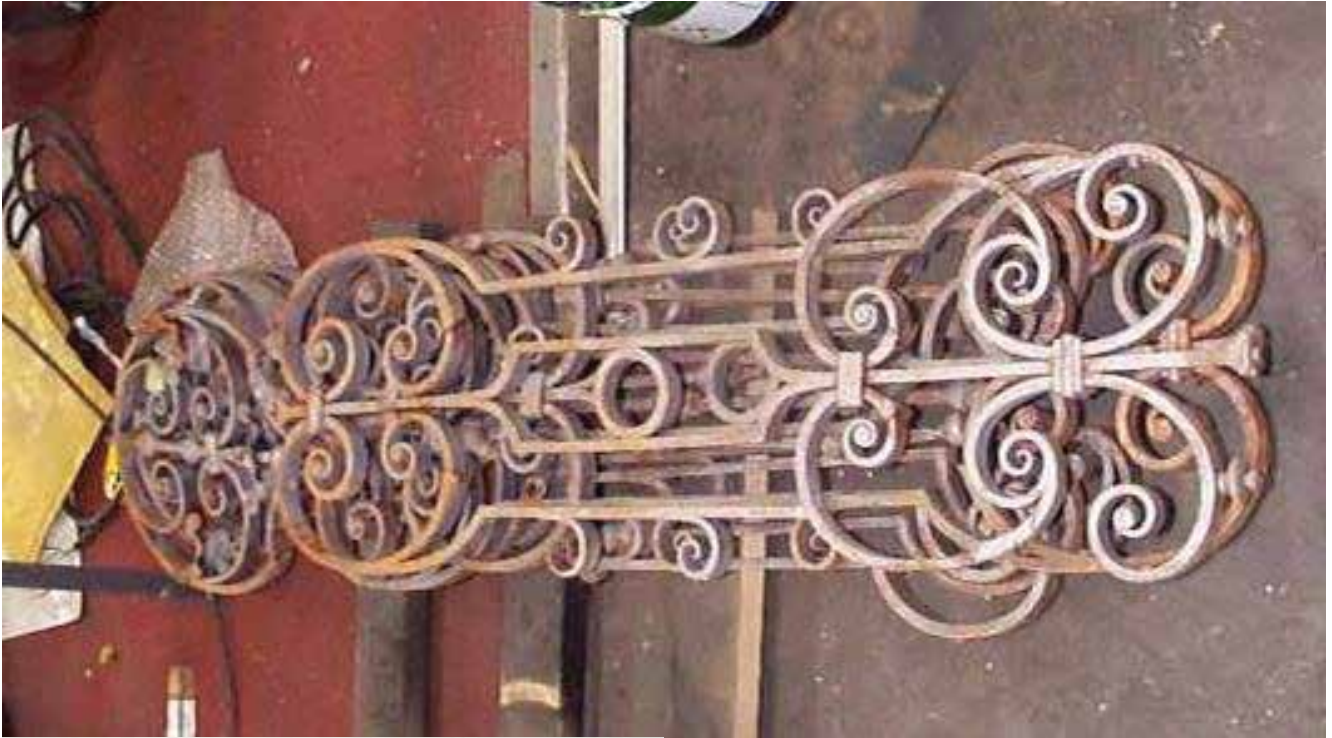
The remaining elements of the gates provided a good indication of the magnificence and build quality of the originals.



The remaining sections were carefully removed and transported back to the Lost Art workshops.



Once back at the Lost Art workshop, the salvaged components were cleaned in order that they could be analysed – both in terms of providing additional detail for the manufacturing process and also to discover which sections were capable of being reutilised.



Initial analysis of these sections provided evidence of significant corrosion and decay. Many sections were missing component features and required significant refurbishment.

For each section, missing or fatally decayed elements were identified and replica sections produced by Lost Art that could be added to the original sections, producing items indistinguishable from those included when the gates were first produced in the 1920's.



A mixture of salvaged and reproduction sections – but which are which?

From the analysis of the salvaged sections and the historical drawings and photographs, component parts were created to allow for production of new section of railings and gates.

This involved the production of jigs and dies to allow the blacksmith to reproduce elements of the original sections.

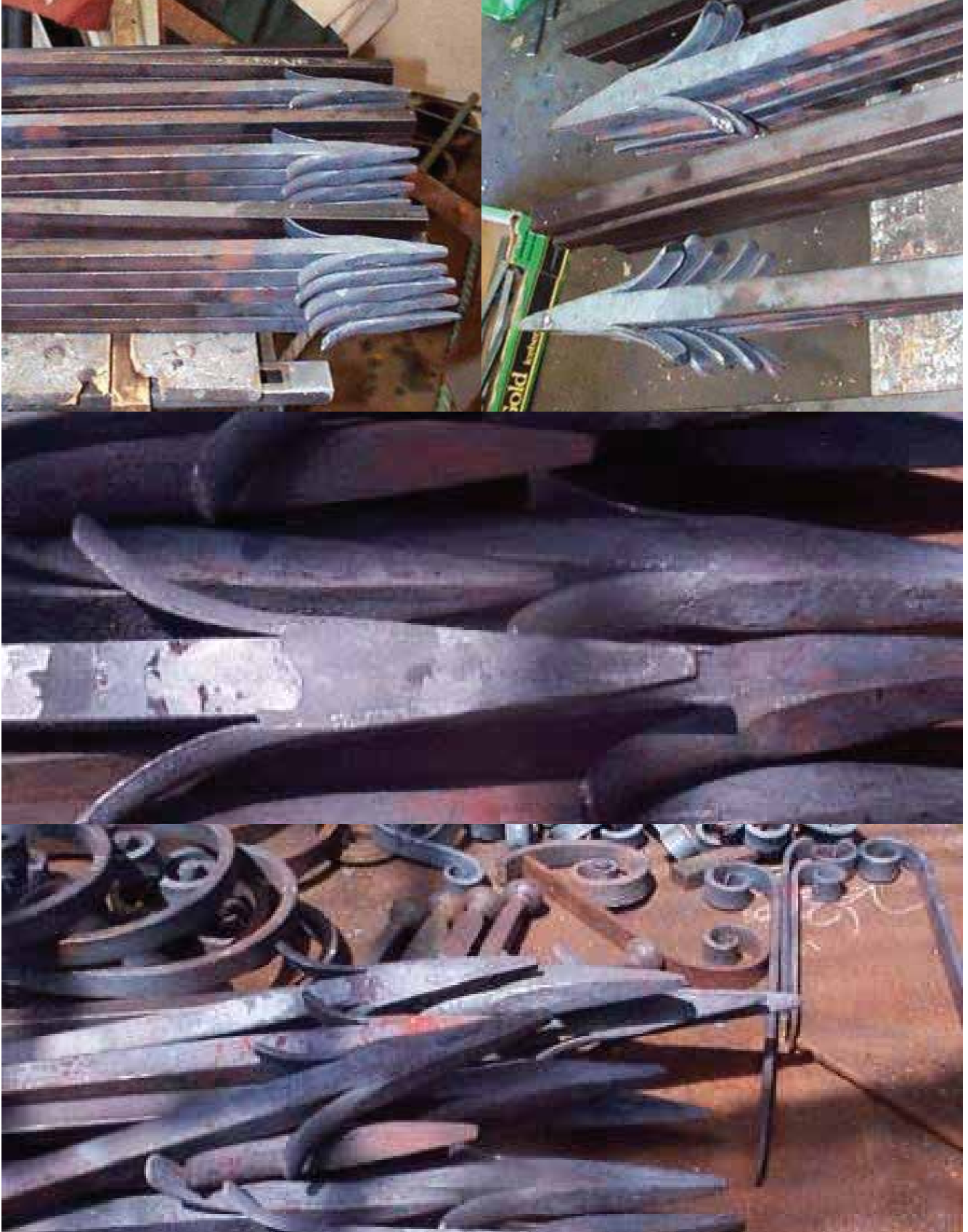


Once the jigs and dies had been produced, the production of components could begin.





Other components were also under production:
Arrows



Tapping the arrow heads for assembly



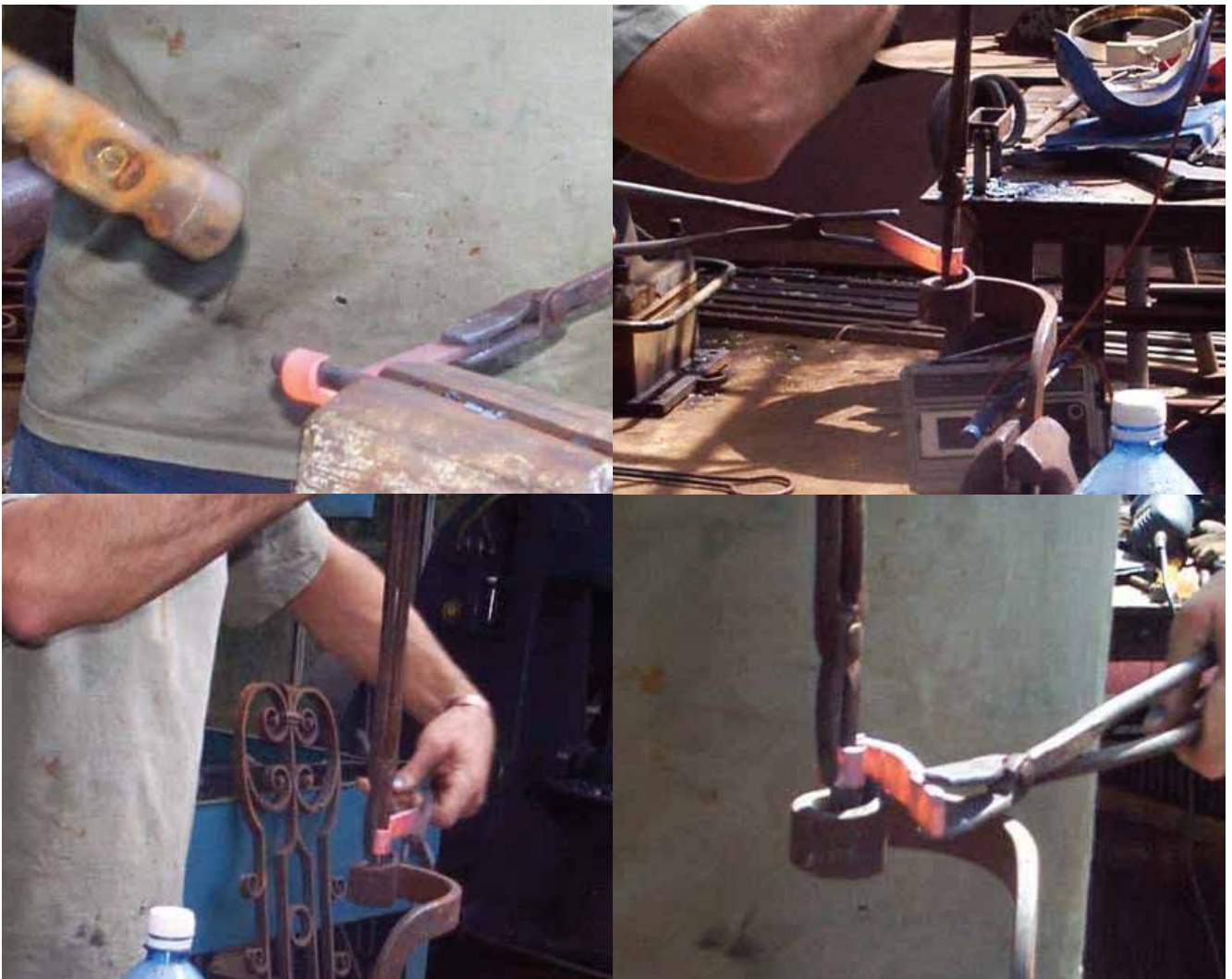
Producing Curls: Heating the metal strips



Beating the strips



Starting the curl



Producing piles of curls of different profiles



Some processes involved hammering by the blacksmith: using a Hardie to break off the required section



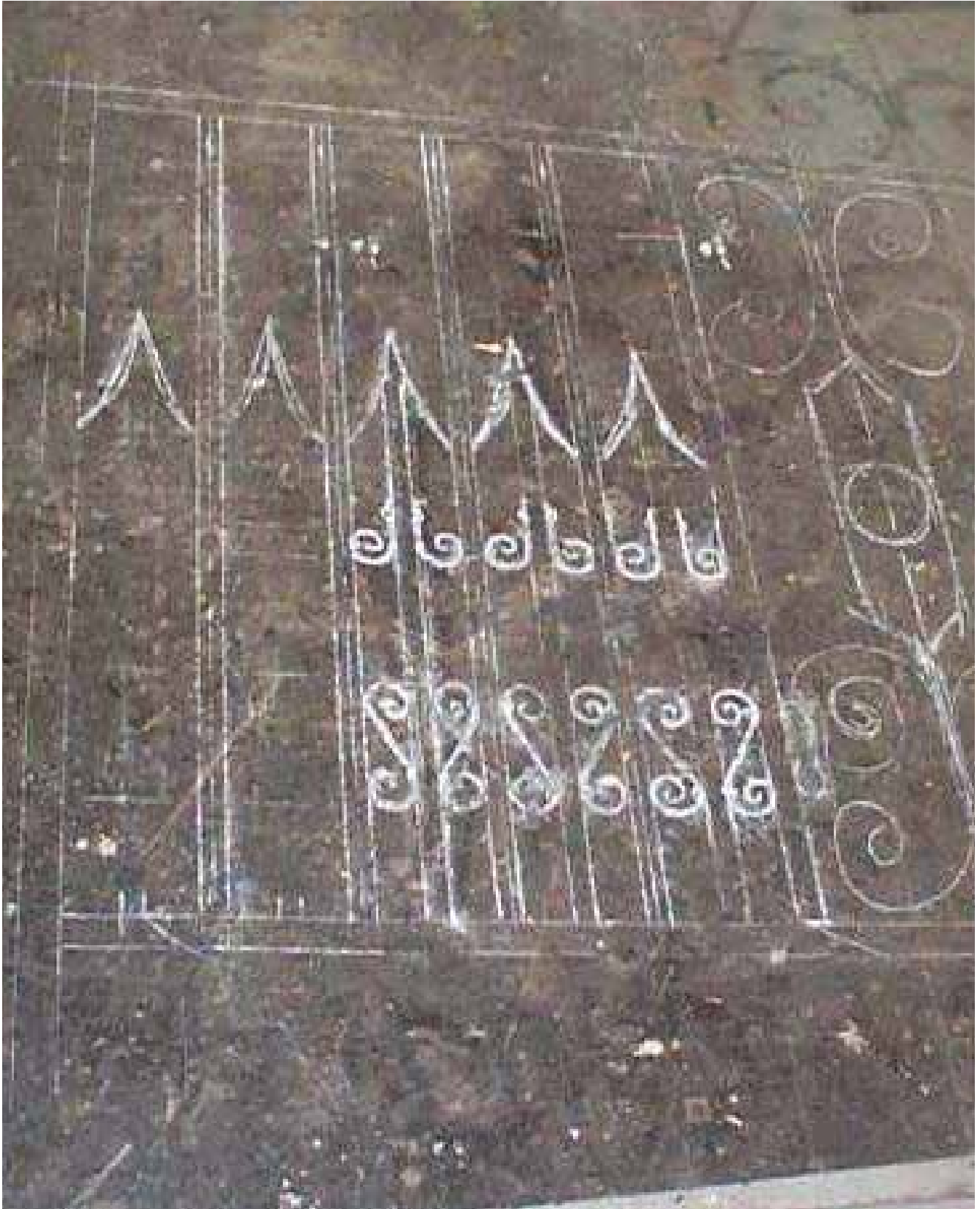
Other processes required a little help from the power hammer:



The smaller components could then be assembled into larger sections – these were then prepared for reconstruction of the gates and subsequent installation:



Production of components continued whilst reassembly commenced:
working from an initial sketch





LOST ART
HISTORIC LANDSCAPE FURNISHINGS





Where do these bits go?



The gates gradually took shape in the workshop.



Before the addition of gold leaf to highlight selected areas.





Finally the gates were installed.





Not forgetting the pedestrian gates at the side.



A selection of other skills and services from lost art.



Fencing and railings



Seating and benches



Cast and wrought iron



Traditional carpentry



Bespoke landscape furniture



Blacksmithing and whitesmithing



WINNER of Conservation award for our work in conjunction with Renfrewshire Council on The Grand Fountain, Paisley



Winner of the Institution of Mechanical Engineers Award for Conservation of an Industrial Heritage Artefact.



WINNER: MONUMENTS AND PUBLIC SCULPTURE ASSOCIATION: Marsh Award for Excellence in Conservation of a Public Sculpture or Fountain 2015.



L O S T A R T

HISTORIC LANDSCAPE FURNISHINGS

Lost Art Limited

1 Yewdale Crescent
Wigan
Lancashire
WN1 2HP
UK

Phone +44 (0)1257 464601

Email office@lost-art.co.uk

Website www.lost-art.co.uk

